

IDENTIFY

THE MISSION



2025 MISSION IMPACT REPORT

A MESSAGE FROM CEO, KRISTI CARR



44,188

MORE THAN A NUMBER

I AM SO EXCITED to give you a glimpse into Identify's 2025 world of missions!

Many of you who are friends, followers, supporters, or travelers have the joy of seeing your particular mission moment in action. And oh, what a thrill it is! I see your hearts explode during engagement. Yet, I long for you to know the **MORE!**

This report is what happens before, with, after, and beyond the work of a short term visit or the click of a financial donation. These are the daily efforts that are forming equations on a supernatural calculator, resulting in mind-blowing formulas like $2 + 2 = 10,000$. Simply put, God's glory lived out through Identify.

Before reviewing other stats, I'd like to highlight a number that represents so much to me personally this year - **44,188**. This wildly high number represents individual messages that I have sent and received on WhatsApp (this does not include general texts, emails, or other platforms).

Why is this significant?

90% of these messages are intimate and deep conversations, prayers, and encouragement with Guatemalans outside of the time I spend in a community or a home. These messages are the relational and spiritual follow-up and development that I get to be part of that no one but God will ever see. They are words exchanged in texts, yet, I firmly believe that in every message, there is a heart that is changing,

softening, healing, or growing (including my own) and that the generosity of Jesus is multiplying more than we know!

Even as I write this letter, I am receiving a WhatsApp message - "Hello friend. I'm having problems at home right now with my family, with myself. Please pray for us. Thank you, I love you. I'm only standing because God loves me."

"Therefore encourage one another and build each other up" 1 Thessalonians 5:11

Just for fun, below is the average # of texts sent by various age groups each year.

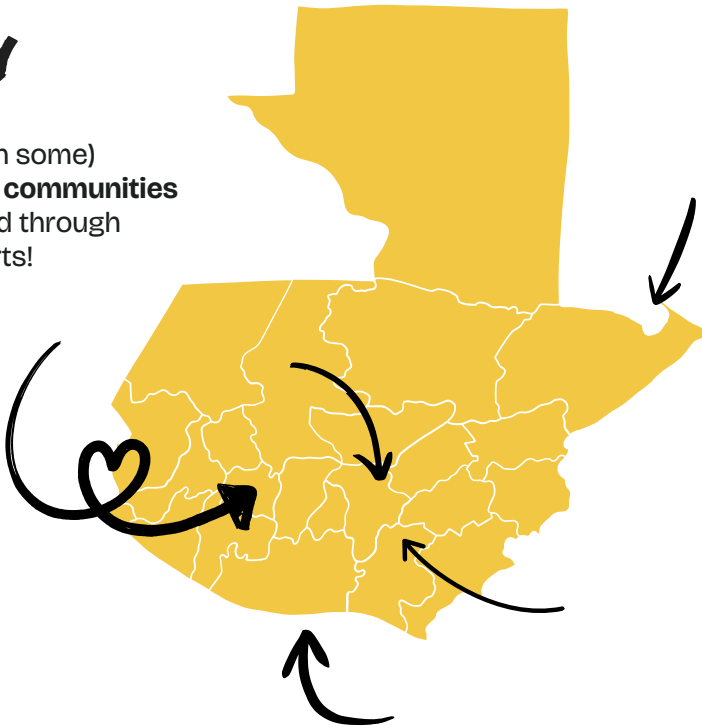
- 15-24 year olds - 36,000
- 35-44 year olds - 18,000
- 65 and older - 5760



THE PEOPLE WE LOVE THE PEOPLE WE NEED

COMMUNITIES

33 (and then some)
Guatemalan communities
were reached through
Identify efforts!



HOST PARTNERS *we are now calling them* ENGAGEMENT PARTNERS

4 of our main **Engagement Partners** who carry out many day-to-day development activities were supported financially every month of the year (we honor them with this title because they are the ones who open the doors for us to effectively interact in communities that are not our own)

TEAMS



76 **adventurous souls** flew from the US into Guatemala to accomplish short-term mission goals while **80** **national partners** from Guatemala who represent Identify in weekly & monthly outreach shared countless road trips to connect with local neighbors and encourage them often

SOULS LOVED & CELEBRATED

Life doesn't happen without people and people definitely make things lively!

Community kindness, team talents, and partner perseverance -
Identify is beyond blessed to experience all of the joys of mission service with so many special ones!

KNOWLEDGE AND DREAMS ARE MEANT TO BE SHARED

Even when a piece is missing, Identify is close, advocating and striving to remove obstacles in vulnerable situations.

When we first met this beautiful soul full of personality at the age of 11, she and her younger siblings had just lost their mother in a tragic incident. Soon after, the loss of their father struck too. Having to transition through grief and many changes in care, G lost a lot of time away from school. When we met, her smile and her story inspired us to STEP IN and ask how we could help. One of the things she needed most was support to return to school and a less complicated childhood.

Knowing that we cannot do everything, but we could do something, the Identify Family helped G over several hurdles; counseling, school scholarship, leadership development through our Mission Training Program, healthy relationships with sponsors, home visits, food security, school supplies, and more. We were not willing to leave her behind!

This year, little G has worked hard to graduate from lower high school and will start her studies again next year. Although she would likely prefer her parents by her side, G has allowed us to be there with her - believing, praying, and encouraging. Her determination is contagious!

Together, we continue celebrating and moving forward, one day at a time!



EDUCATION

SCHOOL SUPPLIES



220 students received school supplies during the school year, allowing them to overcome one of the main obstacles in education - lack of resources and the burden of an unpaid bill hanging over an already stretched family



11 laptop computers were presented to high school and college students, allowing them to take full advantage of homework lessons and assignments



82 monthly education scholarships were given to help students stay in school, move to the next levels, and participate in extra curricular activities as well

WORKSHOPS



13 educational workshops were presented throughout the year, offering opportunities for minds to expand, especially concerning new topics



901 brilliant minds were part of Identify workshops and walked away with new understandings of topics that could be applied to current or future education, careers, or community connection

PLUNDER :(



1 partner - our special needs school - was robbed. Sadly, impact isn't always positive. Most of the equipment and supplies that we provided for them were taken. We are hoping a team of builders will soon help us strengthen the perimeter of the school.

STRATEGIC LEARNING & GROWTH

Education opens doors. When learning is part of every mission, we all grow.

By sharing knowledge and practicing skills together, students and professionals gain confidence and expand opportunities.

Side-by-side, we become stronger as we learn together.



DEVOTION TO THE MISSION

We asked our HEALTHCARE partner, Dr. R, to give us his favorite stats and numbers from the year. As always, he shared the facts with humility, honesty, humor and hope.

"As a healthcare worker in a remote area, I have covered 1574 miles traveling on foot, Tuc Tuc, motorcycle, car, or bus. 300 additional nautical miles were by boat.

To God be honor and glory, because during the year I ate bread and tortillas, even though we are encouraged to eat less of these, ha ha! In very few cases, I had to endure hunger because I had no economy to meet that need, but by God's hand I found provision, especially through Identify who is one of my great suppliers.

Common to our area, our clinic has been attacked on many occasions and I even pay attention to those moments. We often receive phoned in threats from a local social cleansing group. Neighbors bury items as curses in front of the clinic.

Yet, the power I lean on is found in the numbers of God - Isaiah 41:10 and Psalm 23

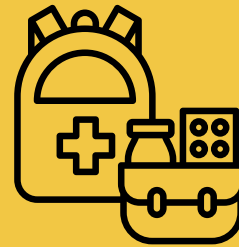
Because being able to serve others, our neighbor, is a satisfaction like when one drinks a glass of water (remember that Livingston is very hot). And often, the glass of water is given by Identify, because of our love for Jesus, and there are countless beautiful moments; when we deliver wheelchairs, canes, walkers, medical treatments, medicines, or when we have coordinated projects for local institutions, or have served beside our church to provide food baskets to families in dire need.

So, at the end of the day, we have assurance, because as Jesus clarified, *It is impossible for men, but for God all things are possible.* Matthew 19:26"

HEALTHCARE

MOBILE CLINICS

20 traveling clinics were brought to communities with limited access to healthcare, allowing us to serve **1695 patients** who might not have received adequate care without medics who were willing to GO!



LOCAL STATIONARY CLINICS

1224 patients came to our clinics, mission home, or online sessions and were treated by caring mission minded professionals and students using equipment provided through fundraising and supply drives

SUPPLIES, SUPPLIES, SUPPLIES

2919



patients
educated on
health topics

850



fluoride
treatments
given

33



wheelchairs &
walkers
distributed

400+



pairs of glasses
provided to improve
or protect sight

50%

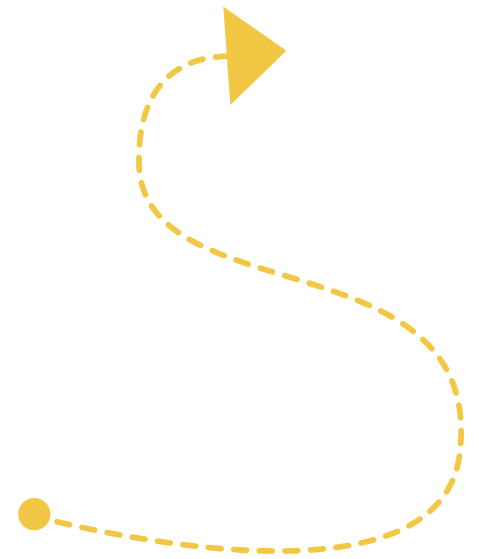


of patients' needing
medications &
supplements
received through us

EFFECTIVE & ACCESSABLE

Health brings hope, and hope transforms lives.

Through our allied health and medical outreach, we support vulnerable families with accessible, compassionate care. From ongoing clinics and trainings to shared resources and prevention, we work together to build healthier communities and a future where quality care is within everyone's reach.



MISSIONARIES, NEAR & FAR

Some ideas flop. Some fly. We've all seen it go both ways.

However, there are those thoughts and visions that you know God has assigned without a doubt and you can clearly see that His only desire is to bless and expand the entire concept beyond wildest imaginations.

Identify's Youth Mission Training Program for Guatemalans has been this anointed SPIRITUAL assignment. Truly, this harvest has been plentiful! With the firm belief that anyone can and everyone should, we set out to train and equip missionaries in all places. Our efforts have paid off and weekly we see those who have said yes, going out to serve in their own communities and beyond. Feeding. Praying. Teaching. Playing. The energy and impact are enormous!

One young missionary told us her story this year. "The year I joined the program, Session 1 fell on the same weekend of my 15th birthday (in Guatemala, the Quinceañera celebration is as important and elaborate as a wedding). Young N shared her dilemma with us. My parent told me, "You can be a missionary or you can have a celebration. You choose." N confirmed that for her, there was only one choice. She then told us that since that day, life has been VERY, VERY difficult. However, when we asked her if she would do it differently, she said, "I would make the exact same choice every time."

We continue to dream in this beautiful reality and believe wholeheartedly that seeing that Identify t-shirt near and far, is a small, but mighty representation of God's bigger picture in the modern world.



SPIRITUAL

GOSPEL & GROWTH



550 Bibles were shared with those who wanted to know more about Jesus and have access to His word on a consistent basis



2 retreats were offered, allowing many to leave their usual surroundings with peers and focus on uplifting topics guided by caring leaders



2250 Christian literature books, small packets, or devotionals were shared with people, especially those in moments of difficulty & hardship



38 of 57 Guatemalan youth missionaries who were trained in our yearly programs are still actively serving in their neighborhoods and beyond and have been key in initiating mission outreach programs in **3** of their home churches or community centers



90 visits to Homes (most likely more that didn't land in the books) resulting in many conversations about shared struggles, concern, and most importantly, hope

FAITH-BASED OUTREACH EVENTS

7 communities were part of ongoing weekly or monthly outreach events, where the story of Jesus and God's purposes is explained, discussed, celebrated, and embraced



Between **230-480 participants** attended these faith-based events each month, giving an average of **269 people** learning and growing together on a regular basis

LIVING IN FULL COLOR

Everything we do is because of our love for Jesus.

Through prayer, service, and genuine relationships, we share His love and hope with others. Step by step, we see the lives and hearts of many transformed.





FEEDING BODY & SOUL

One of the simplest things we can do to meet people where they are in vulnerable areas is to feed them. In almost every home or situation, there is a lack of consistent sustenance and nutrition. With this insecurity, the brain and heart have potential to shut down. Yet, with the whole person in mind, WELLBEING is on our radar.

Whether it is a colorful, vitamin enriched cereal before church, groceries carried to a home, a sandwich while waiting at a hospital, or a warm meal cooked for an overwhelmed family in our mission home - **Identify and our partners are ready to fill bellies, then encourage souls.**

Two mothers in Zone 3 tell us, "The church is a safe place where we can pray and leave all our burdens. Our children no longer use bad language; they learn Bible verses. We are grateful for all these years in which a bowl of cereal has served as food for them, but above all they have a place where they can gather and be a blessing to our community."

WELLBEING



PROJECTS

∞



Beds

3



Water
Systems

7



Home Builds
/Repairs

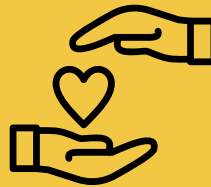
5



Light
Construction

BENEVOLENCE

25 urgent situations that were unable to bear were taken from families in need when Identify provided funds to cover emergency utilities, food, healthcare, or unexpected funeral expenses



MEALS

8527 meals were served to vulnerable individuals, to those in difficult moments, or to those who simply needed a nod of friendship and encouragement on a particular day. Don't ask us how many meals mission teams ate because we didn't count - those guys and girls stay hungry!

WE'LL MEET YOU THERE

Every person deserves dignity, value, and connection.

Through basic supplies, clean water, nutrition, housing, and community support, we join families in building a better life.

Small acts of care create lasting change.

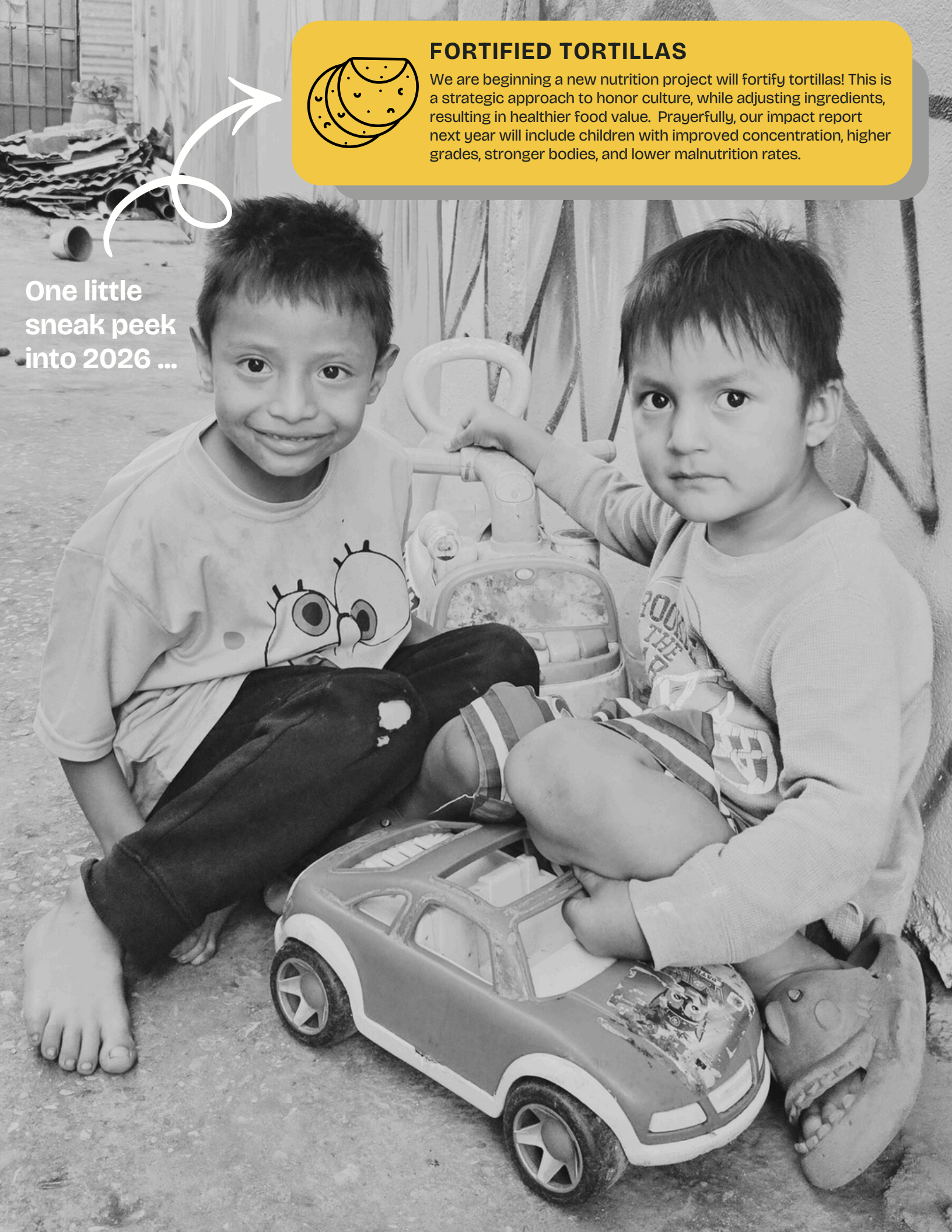




FORTIFIED TORTILLAS

We are beginning a new nutrition project will fortify tortillas! This is a strategic approach to honor culture, while adjusting ingredients, resulting in healthier food value. Prayerfully, our impact report next year will include children with improved concentration, higher grades, stronger bodies, and lower malnutrition rates.

One little
sneak peek
into 2026 ...



A YEAR WORTH CELEBRATING!



Thank you to each person who is part of our ongoing efforts!
Identify is only possible when friends and strangers are generous with time, talent, heart, and resources.

GIVING & GROWING



260 Amazon Wishlist items were purchased and sent to support our day-to-day outreach efforts and ministry needs



3 supply drives were held for us, allowing us to focus on very specific needs in our communities



7 leaders were developed through Identify's TLD training program and are using these skills to enhance their roles as missionaries, team leaders, professionals, and students



35 recurring donors faithfully supported Identify's mission budget each month, with ongoing gifts ranging from **\$20 - \$1500** and **2** donors sending from Guatemala

Please consider partnering with Identify through next year's mission team participation, recurring giving, project donations, or missionary support

One area of impact that will help us with sustainability is to increase our MONTHLY RECURRING GIVERS from 35 - 50 in the year ahead



IDENTIFY

THE MISSION

EIN#: 46-4318918

6600 Sugarloaf Parkway Suite 400 PMB 263 Duluth, GA 30097
404.590.4908

www.identifythemission.org
www.identifythemission.org/donate